

4. Terminating character suffix



** Enable terminating character suffix



Disable terminating character suffix



** Set terminating character to CR (0x0D)



** Set terminating character to CR (0x0D, 0x0A)

5. Scan mode



Continuous mode



Sense mode

FCC

Radiofrequency interface requirements

Radio transmitters (part 15)

This device complies with part 15 of the FCC rules.

Operation is subject to the following two conditions:

- 1 This device may not cause harmful interference.
- 2 This device must accept any interference received, including interference that may cause undesired operation.



Tested to comply with FCC Standards

FOR HOME OR OFFICE USE



Marking and European Economic Area (EEA)

Statement of Compliance

We hereby declare that this device complies with the essential requirements and other relevant provisions of Directive 2014/53/EU.

The ventilation should not be impeded by covering the ventilation openings with items such as newspapers, table cloths, curtains, etc.;

This product's max operating ambient temperature is 60 degrees C.

⎓ Direct Current Symbol

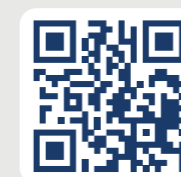


Recycling

This product bears the selective sorting symbol for waste electrical and electronic equipment (WEEE). This means that this product must be handled pursuant to European directive 2012/19/EU in order to be recycled or dismantled to minimize its impact on the environment.

When the scanner is not working, please:

- 1 Ensure that all cable connections are secure and that only the supplied cables are used.
- 2 Ensure that the screen backlight is on when reading digital barcodes on a mobile phone and that the barcode is not defaced when reading it on paper. Wrinkled, soiled, or torn barcodes might be unreadable.
- 3 Ensure that the barcode type is enabled.



Visit our website newland-id.com

FM3080 Hind



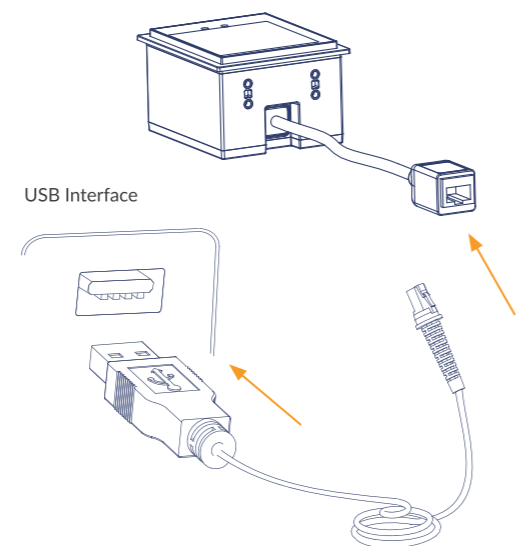
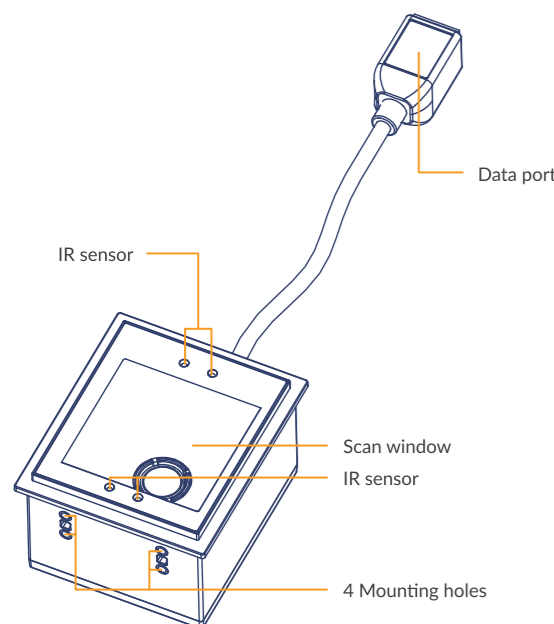
FM3080

Connecting to the host with USB cable

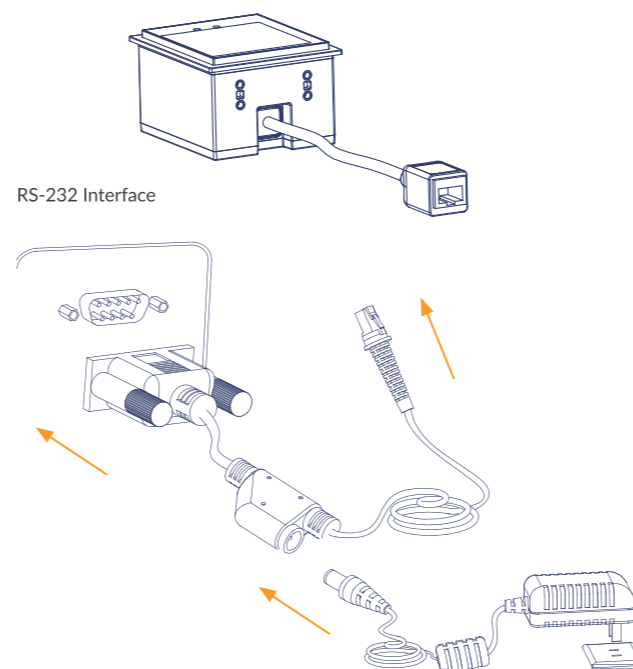
Connecting to the host with RS-232 cable (optional)

Scanning instructions

Barcode programming



Note: the host refers to a PC, POS, or other terminal equipped with USB or RS-232 interface.



Sense scan mode:

- 1 Connect the scanner to a host with the cable. Then the scanner will be powered on.
- 2 Present the barcode on a mobile phone screen or paper to the center of the scan window.
- 3 For a successful read, the scanner will beep.

1. Use of programming barcodes



Enter setup / Exit setup

2. Factory defaults



Restore all factory defaults

3. USB interface



USB CDC



USB HID keyboard